

MAINSTREET 40

A REPLAT OF PARCEL U, ARVIDA PARK OF COMMERCE PLAT NO. 5, ACCORDING TO THE PLAT THEREOF, AS RECORDED IN PLAT BOOK 44, AT PAGES 111 AND 112 OF THE PUBLIC RECORDS OF PALM BEACH COUNTY, FLORIDA, AND A PORTION OF SECTIONS 1 AND 12 TOWNSHIP 47 SOUTH, RANGE 42 EAST AND A PORTION OF SECTIONS 6 AND 7 TOWNSHIP 47 SOUTH, RANGE 43 EAST, PALM BEACH COUNTY, FLORIDA, CITY OF BOCA RATON, PALM BEACH COUNTY, FLORIDA.

86

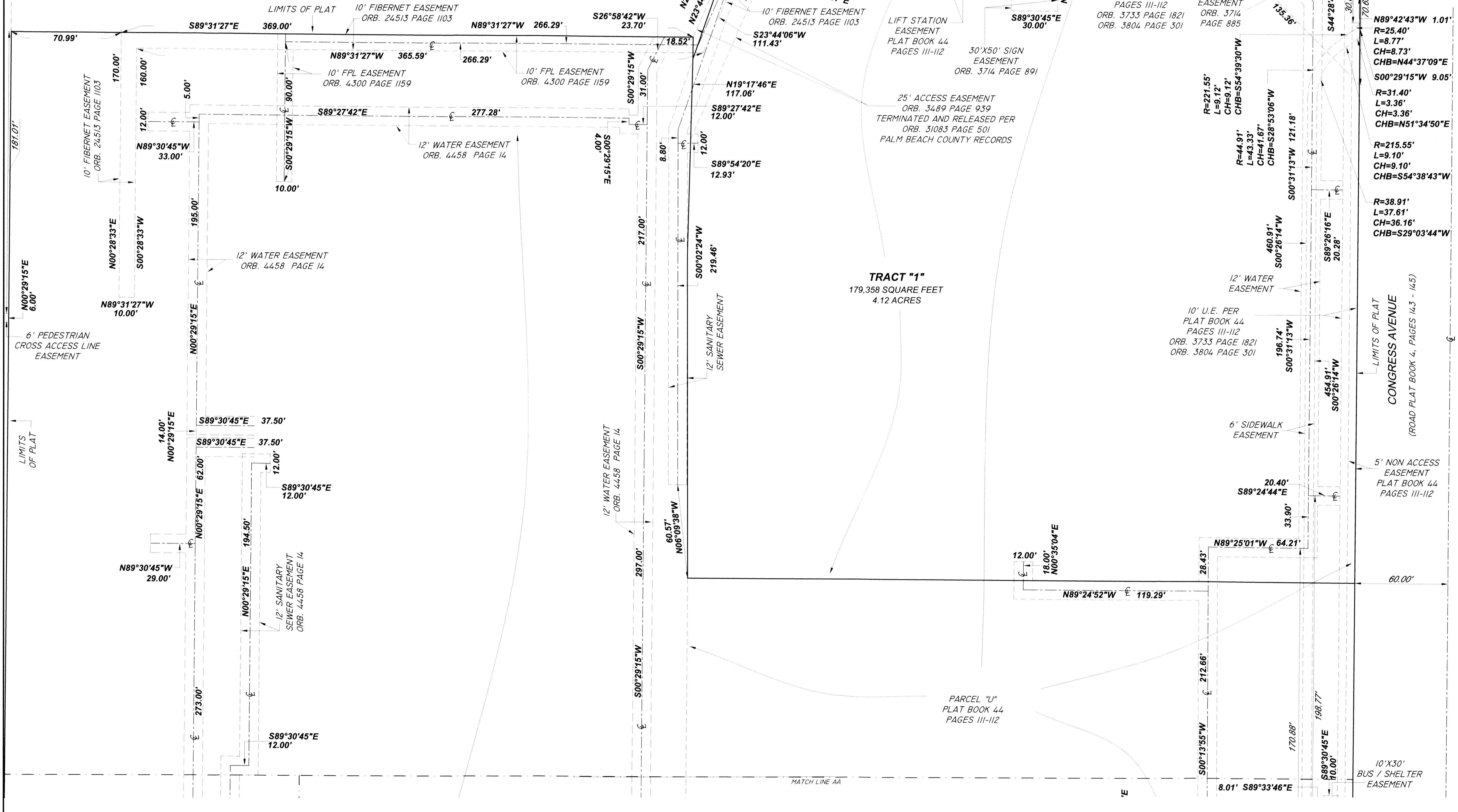
THIS INSTRUMENT PREPARED BY FRANCISCO F. FAJARDO OF LANNES AND GARCIA, INC. PROFESSIONAL SURVEYING AND MAPPING 4967 SW 75th AVENUE, MIAMI, FLORIDA 33155

FOR EASEMENTS DETAIL SEE PAGES 3 THRU 6

"NOTICE" THIS PLAT, AS RECORDED IN ITS GRAPHIC FORM, IS THE OFFICIAL DEPICTION OF THE SUBDIVIDED LANDS DESCRIBED HEREIN AND WILL IN NO CIRCUMSTANCES BE SUPPLANTED IN AUTHORITY BY ANY OTHER GRAPHIC OR DIGITAL FORM OF THE PLAT, THERE MAY BE ADDITIONAL RESTRICTIONS THAT ARE NOT RECORDED ON THIS PLAT THAT MAY BE FOUND IN THE PUBLIC RECORDS OF PALM BEACH COUNTY.

STATE OF FLORIDA
 COUNTY OF PALM BEACH
 THIS PLAT WAS FILED FOR RECORDS AT _____ M.
 THIS _____ DAY OF _____
 IN PLAT BOOK _____
 ON _____
 PAGES _____ AND _____
 SHARON R. BOCK
 CLERK AND COMPTROLLER
 BY: _____
 DEPUTY CLERK

SHEET 3 OF 6



N89°42'43"W 1.01'
 R=25.40'
 L=8.77'
 CH=8.73'
 CHB=N44°37'09"E
 S00°29'15"W 9.05'
 R=31.40'
 L=3.36'
 CH=3.36'
 CHB=N51°34'50"E
 R=215.55'
 L=9.10'
 CH=9.10'
 CHB=S54°38'43"W
 R=38.91'
 L=37.61'
 CH=36.16'
 CHB=S29°03'44"W

CONGRESS AVENUE
 (ROAD PLAT BOOK 4, PAGES 143 - 145)

5' NON ACCESS EASEMENT
 PLAT BOOK 44
 PAGES 111-112

10'X30'
 BUS / SHELTER
 EASEMENT